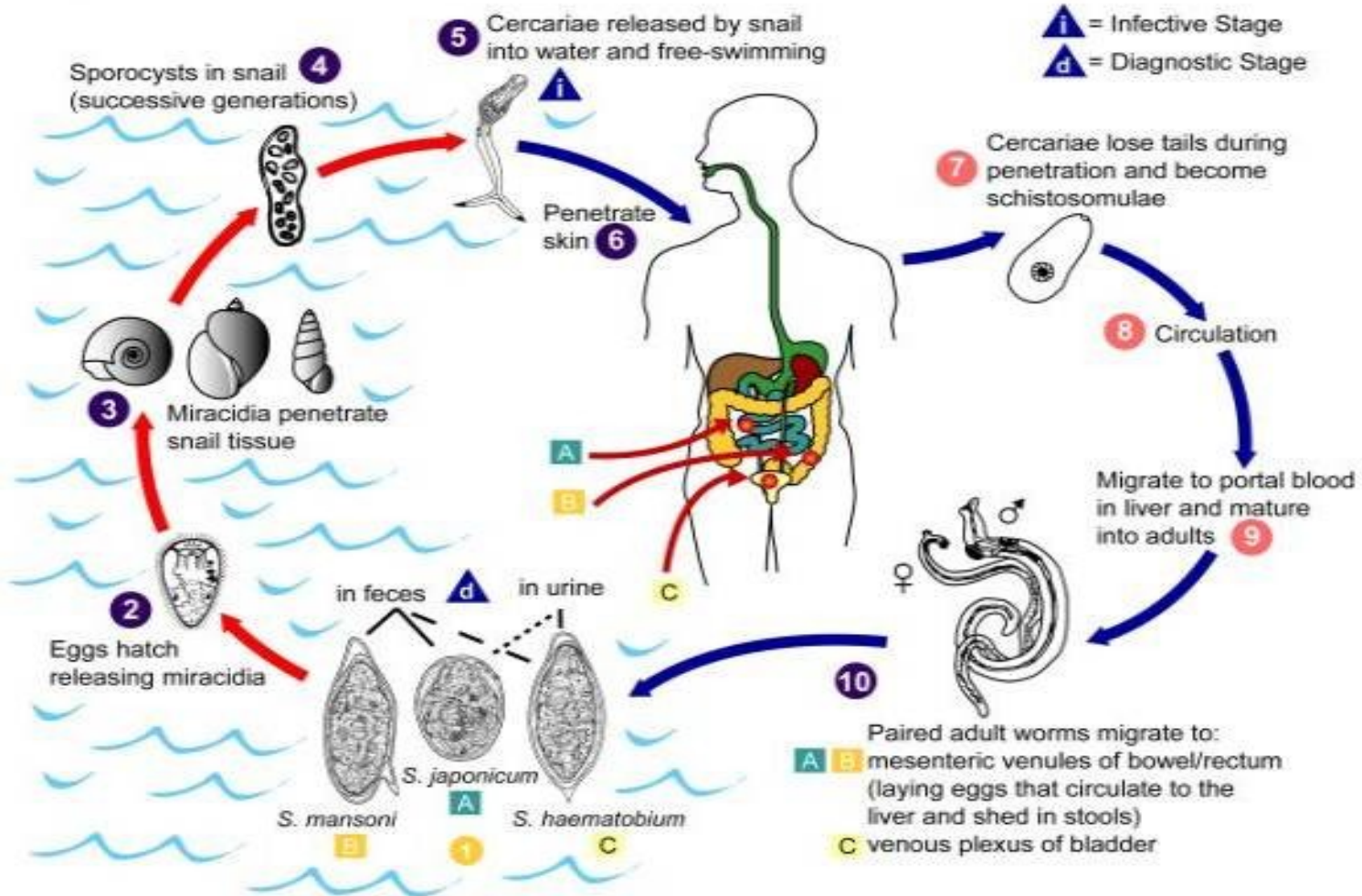


# **Management of schistosemiasis**

Dr. Iman Jassar  
KUH

# Schistosomiasis

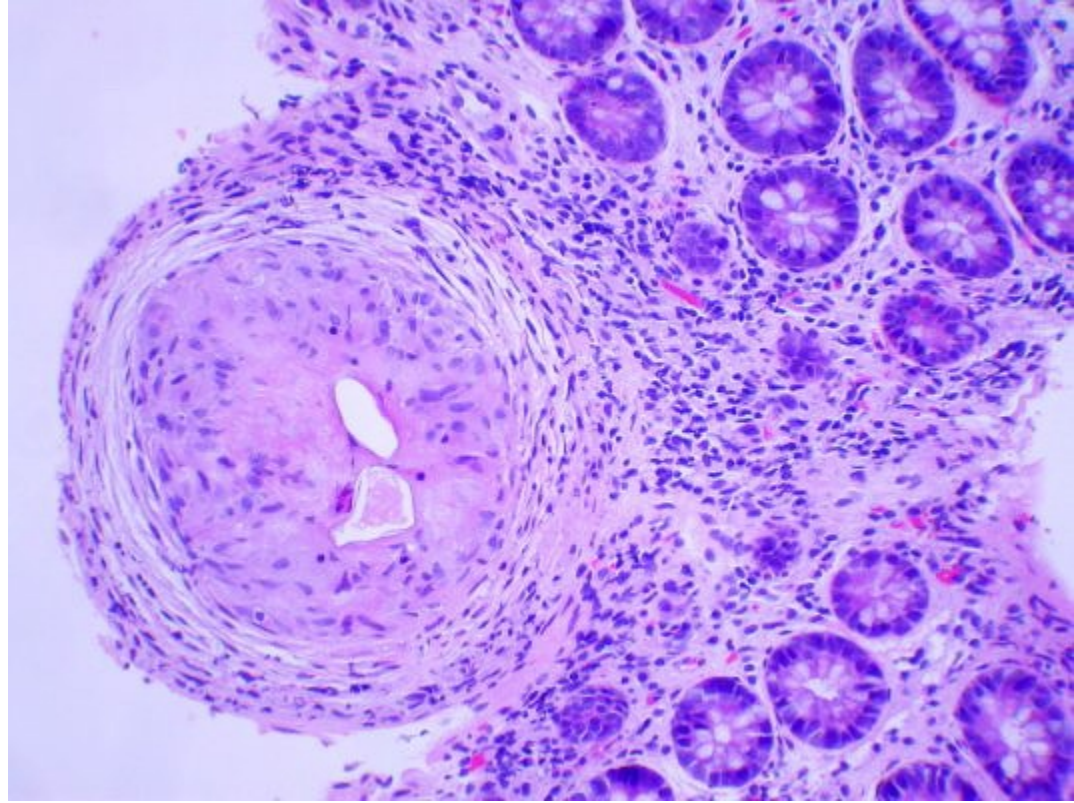
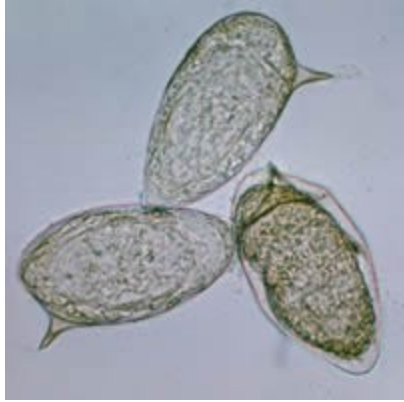


# Clinical features:

- Acute schistosemiasis( rash, katyama fever)
- Chronic schistosemiasis acc. To site of egg)
- Ectopic schistosemiasis(CNS, heart)

# Laboratory diagnosis

- **CBC, LFT ,imaging study**
- **Microscopic identification** of eggs in stool or urine is the most practical method for diagnosis
- **Tissue biopsy** (rectal **biopsy** for all species and **biopsy** of the bladder for *S. haematobium*)
- **Antibody detection** can be useful in both clinical management & for epidemiologic surveys
- **Ag detection.**
- **Molecular study.**



# Prevention

- Traveler ..... Don't swim
- Control source of infection ... Rx the infected human & domestic animals
- Endemic areas..... Target is the snail((adding Molluscicides niclosamide, acrolein, copper sulfate,
- Proper irrigation systems and engineering are key

# Treatment

- **Praziquantel is the best choice of drug for the therapy of schistosomiasis**
- **Dose:**
  - chronic schistosomiasis**  
**10mg/kg, tid. Po, for 2 days, total 60mg/kg**
  - Acute schistosomiasis**  
**10mg/kg, tid. po, for 4 days, total 120mg/kg**

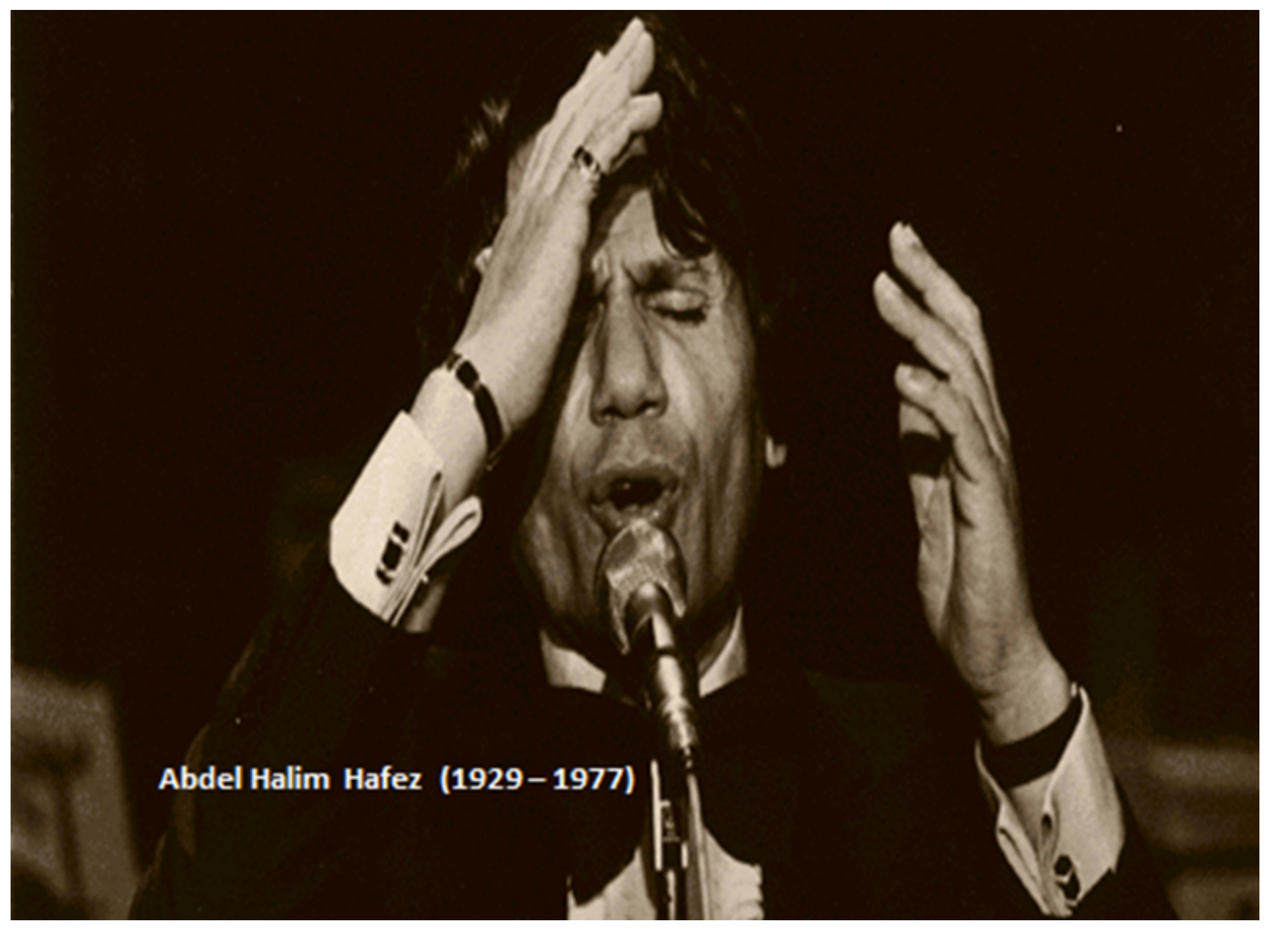
# Treatment(cont.)

- Metrifonate □ against *S. haematobium*
- Niridazole □ against *S. japonicum*
- Oxamniquine □ against *S. mansoni*
- Artemisinins, trioxolanes..future drugs..
- **Note;**
- *Fibrosis*
- *Rx acc. To clinical stage*
- *WHO*



# Vaccination

- Irradiated cercariae vaccine very effective in clinical trials..... as human vaccine NO.
- Currently testing combination-protein and combination DNA vaccines but so far unsuccessful.

A black and white photograph of the Egyptian singer Abdel Halim Hafez. He is shown from the chest up, wearing a dark suit jacket over a white shirt with a dark bowtie. He is singing into a vintage-style microphone. His eyes are closed, and his hands are raised to his face, with fingers spread, in a dramatic gesture. The background is dark and out of focus. The lighting is dramatic, highlighting his face and hands.

**Abdel Halim Hafez (1929 – 1977)**

Thank u

- **Comments**
- **or additions**
- **are**
- **welcomed**